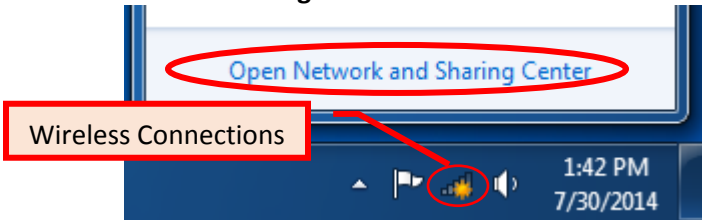


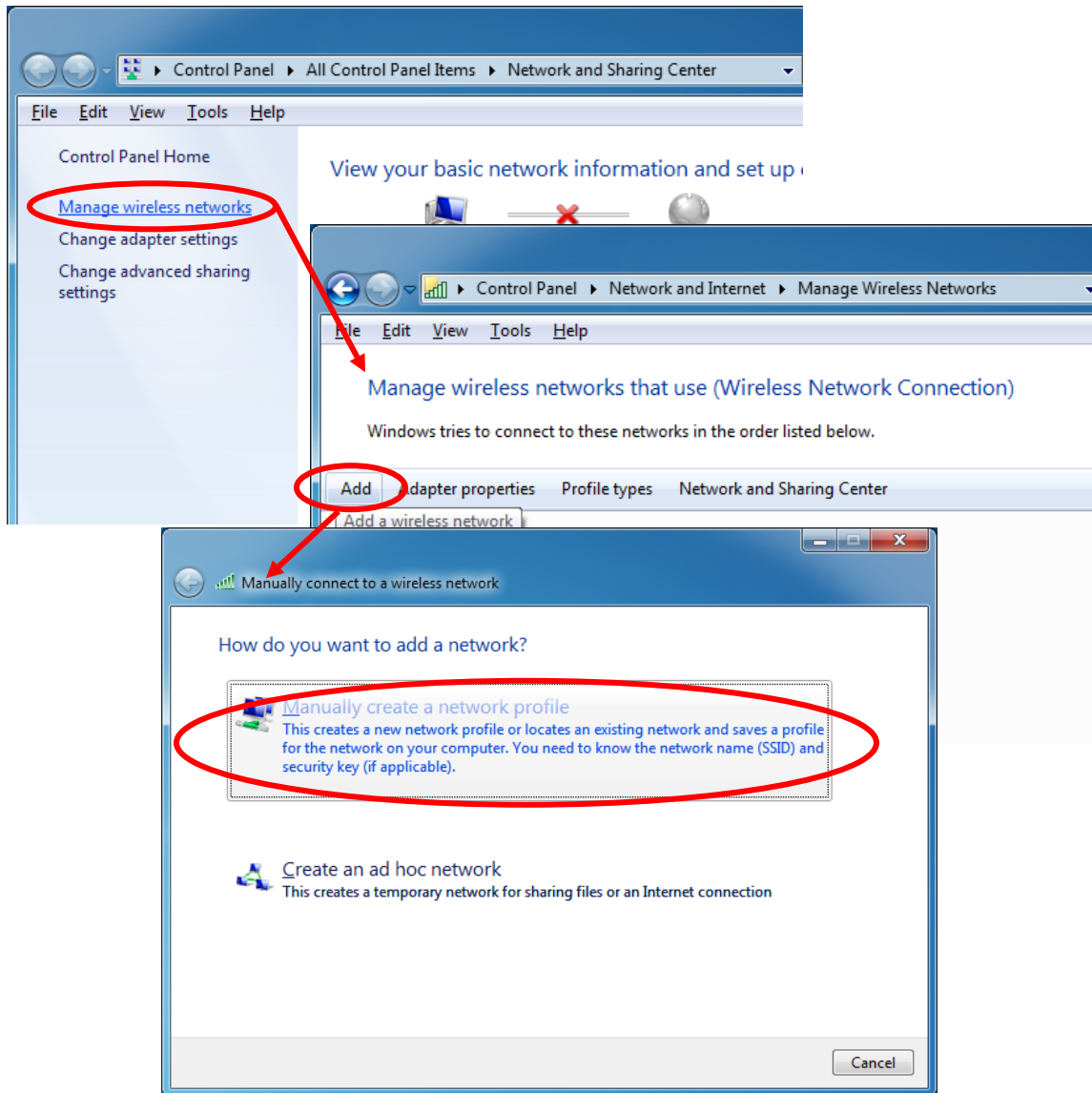
CSU Channel Islands

Wireless setup for personal laptop – Windows 7

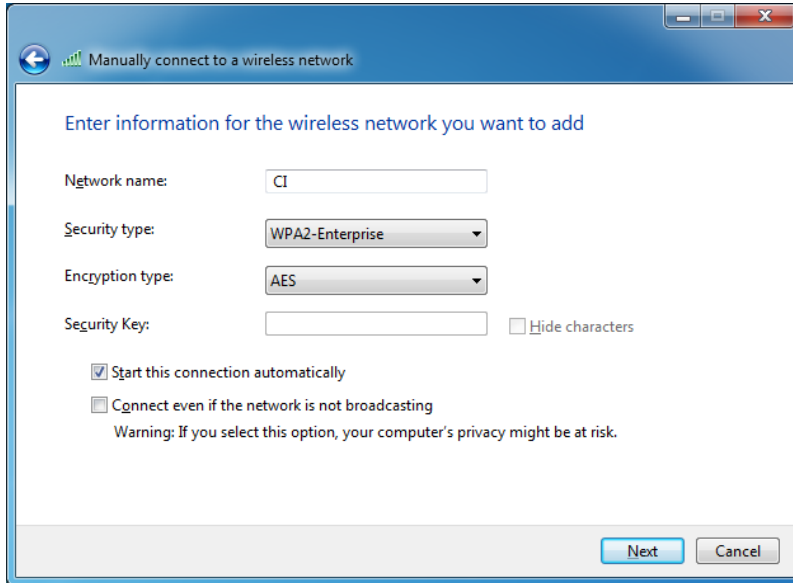
1. Select **Wireless Connections** (located at the bottom right of the screen) > **Open Network and Sharing Center**



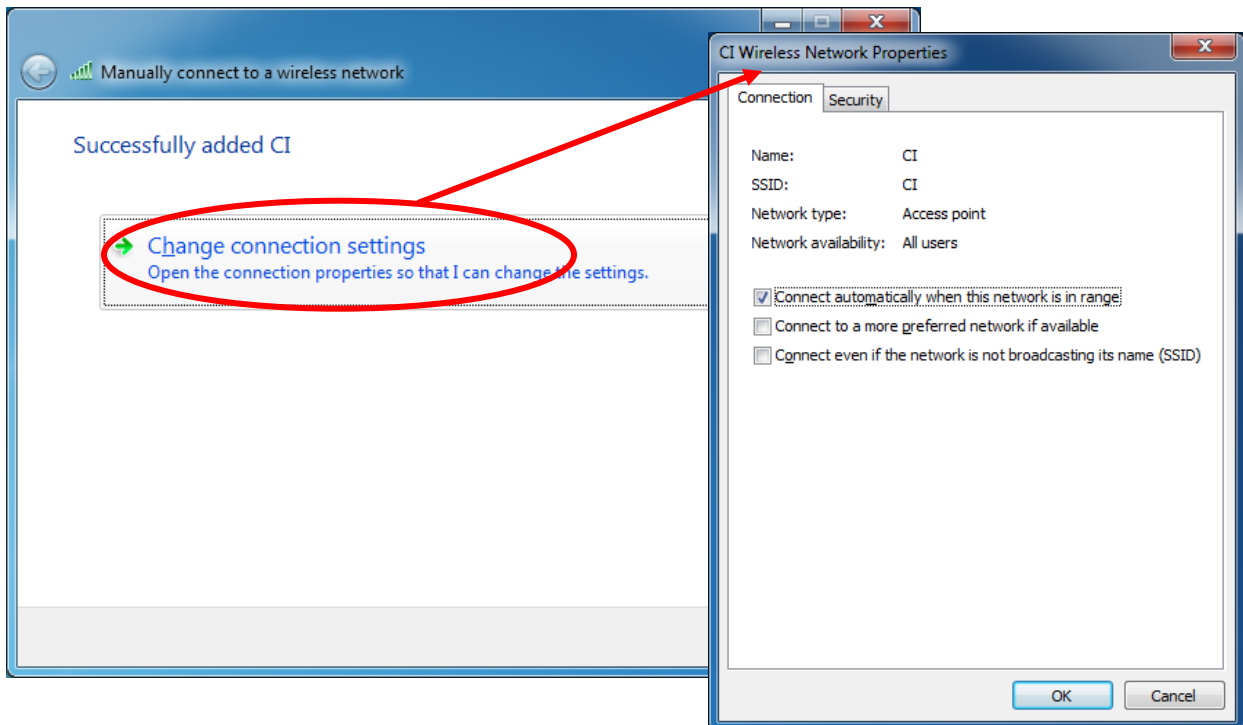
2. Select **Manage wireless networks** > **Add** > **Manually create a network profile**



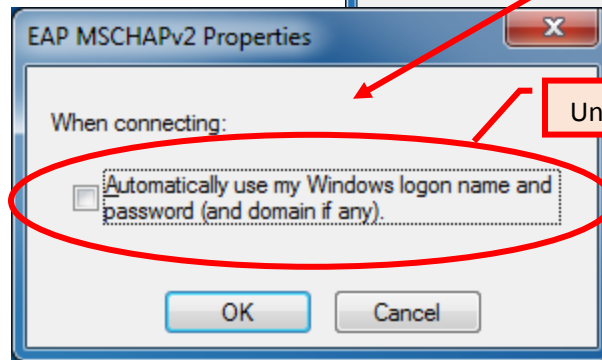
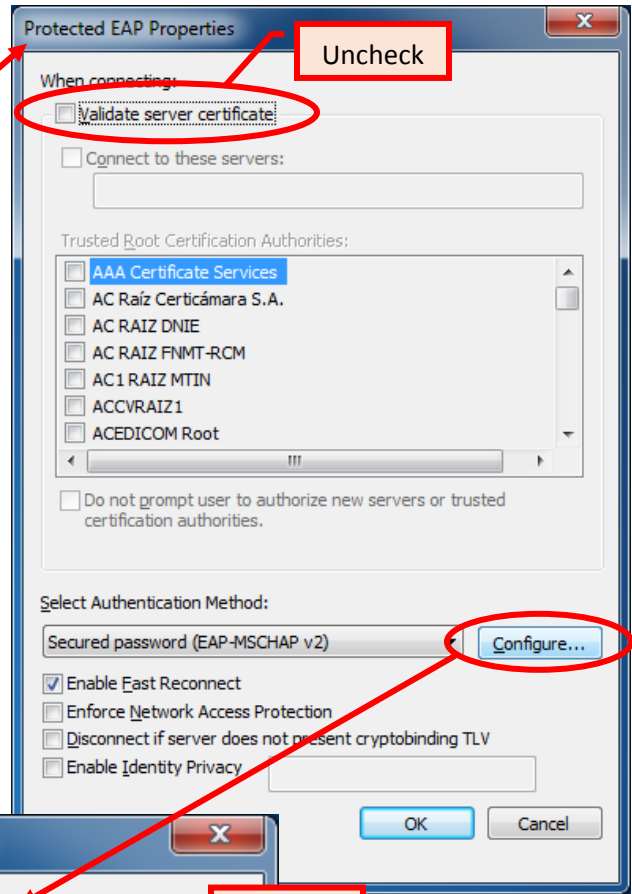
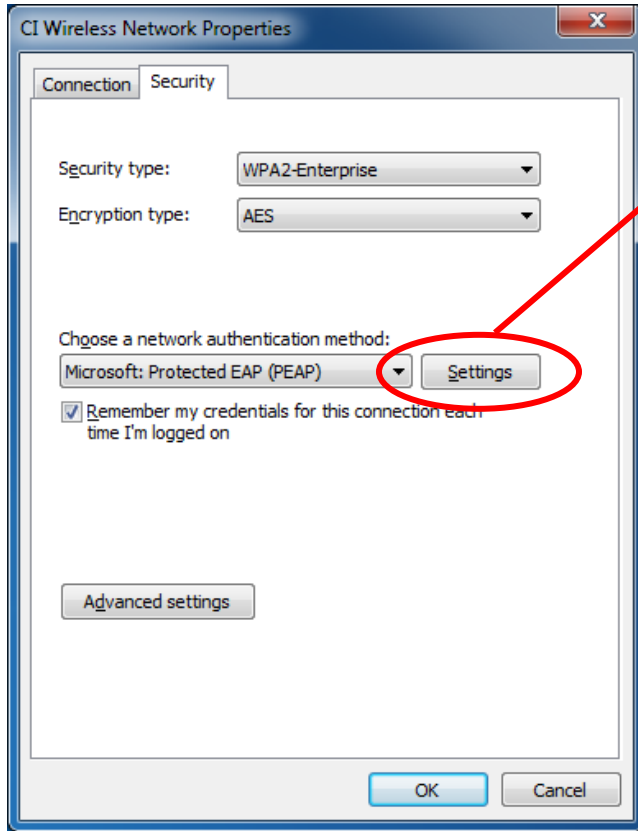
3. Enter the following information > **Next**
Network name: **ci**
Security type: **wpa2-enterprise**
Encryption type: **aes**
Start this connection automatically: **checked**



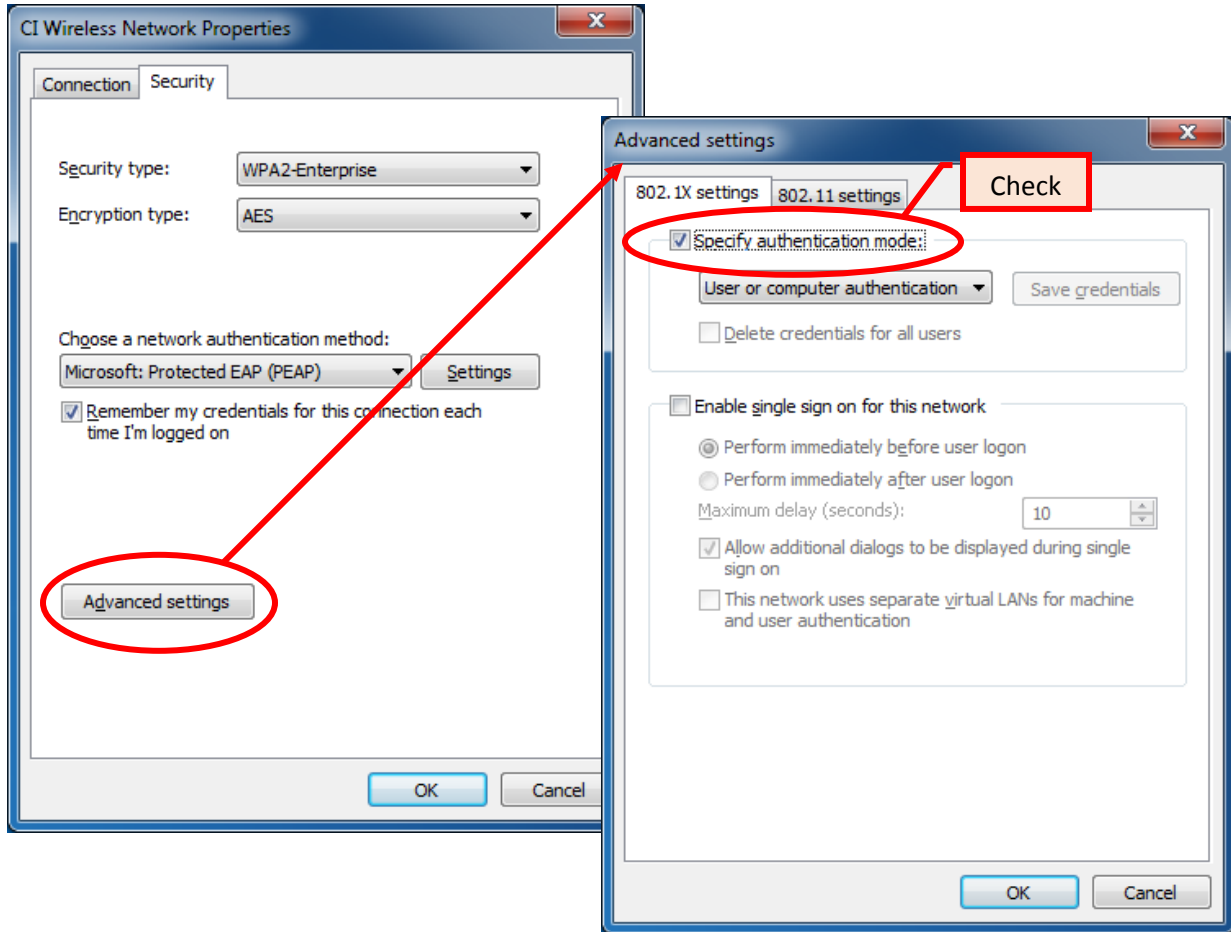
4. Select **Change connection settings**



5. Select the **Security** tab > **Settings** > uncheck **Validate server certificate** > **Configure** > uncheck **Automatically use my Windows logon name and password (and domain if any)** > **OK** > **OK**



6. Select **Advanced settings** on *CI Wireless Network Properties* window under **Security** tab > check **Specify authentication mode** > **OK**



7. Click the information bubble when it appears on the bottom right of the screen > Enter myCI Username and Password

